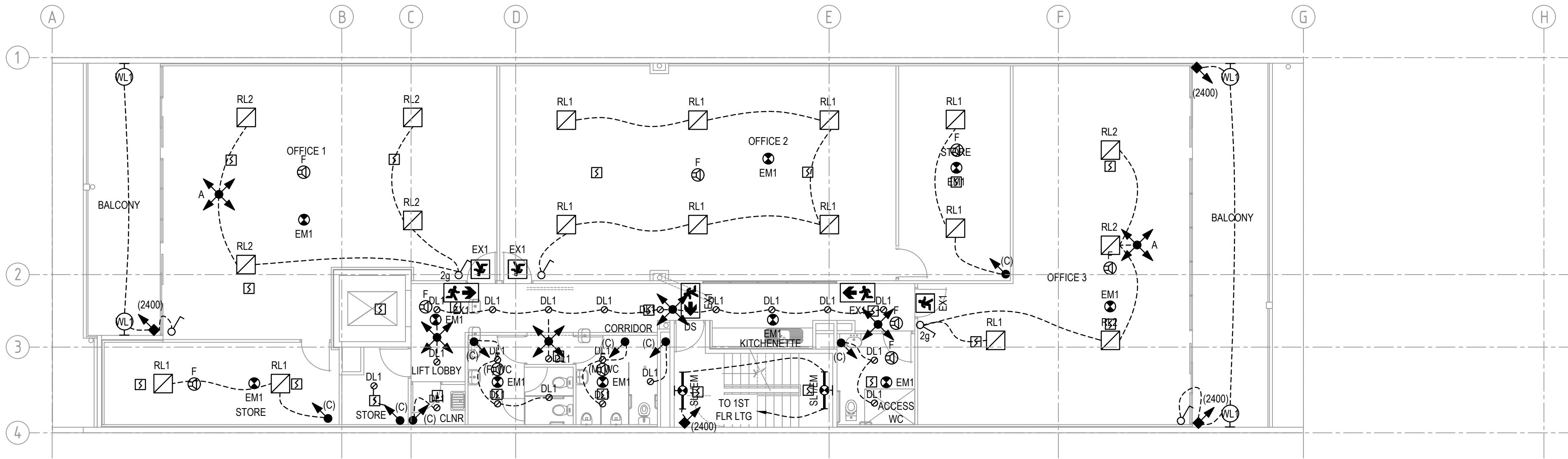


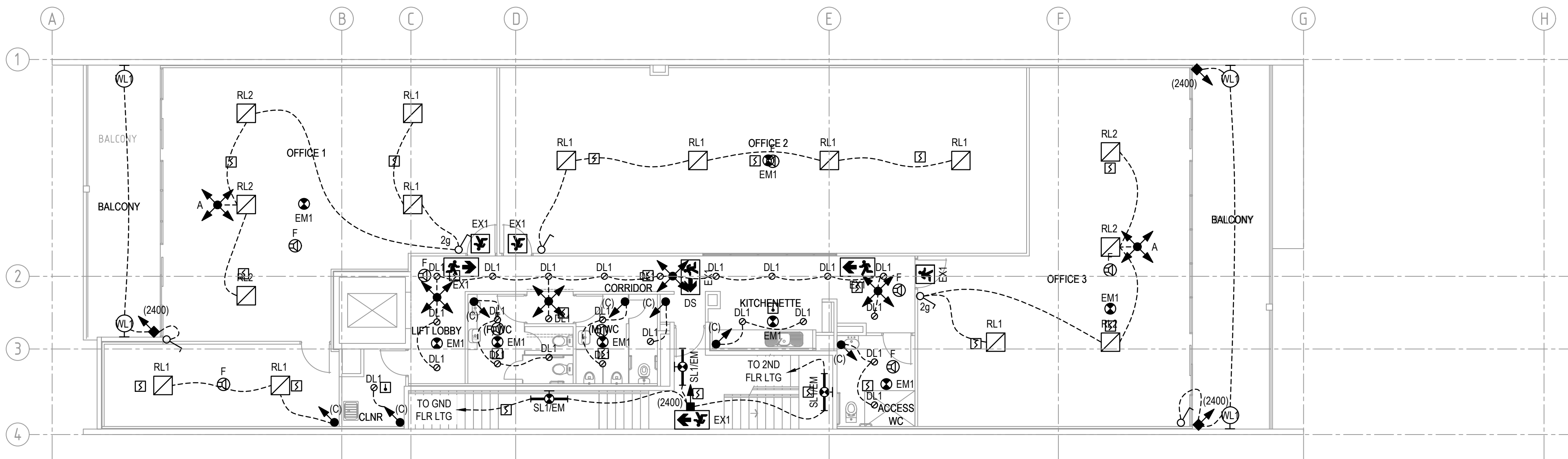
NOTES:

1. ALL SWITCHES AND CONTROLS ON AN ACCESSIBLE PATH OF TRAVEL SHALL BE LOCATED NOT LESS THAN 500mm FROM INTERNAL CORNERS OR OBSTACLES, EXCEPT WHERE PLACED ON THE ARCHITRAVE ON THE LATCH SIDE.
2. FOR ALL ACCESS WC FACILITIES, ROCKER ACTION AND / OR TOGGLE SWITCHES SHALL BE PROVIDED AND HAVE A MINIMUM DIMENSION OF 30mm X 30mm. PUSH-PAD SWITCHES SHALL HAVE A MINIMUM DIMENSION OF 25mm IN DIAMETER.



SECOND AND THIRD FLOOR PLAN  
SCALE 1:100

DRAWINGS TO BE READ IN CONJUNCTION  
WITH ELECTRICAL SPECIFICATION



FIRST FLOOR PLAN  
SCALE 1:100

Rev	Date	Issue Description	By
A	21-11-18	TENDER ADDENDUM	PTK
-	27-08-18	TENDER ADDENDUM	PTK

Project  
PROPOSED COMMERCIAL  
DEVELOPMENT  
97 KING WILLIAM STREET  
KENT TOWN

Title  
ELECTRICAL SERVICES  
FIRST AND SECOND - THIRD FLOORS -  
LIGHTING AND SECURITY LAYOUT

Architect  
**ANTHONY DONATO ARCHITECTS**  
Suite 5/59 Fullarton Road | Kent Town SA 5087  
t. 08 8364 6888 | f. 08 8364 5355 | www.adarchitects.com.au

**SECON**  
consulting engineers  
456 PULTENEY STREET  
ADELAIDE  
SOUTH AUSTRALIA 5000  
TEL: 08 8223 7800  
engineers@secon.net.au  
A.B.N. 30 613 300 299  
A.C.N. 613 300 299

© COPYRIGHT SECON PTY. LTD. 2017

Drawn	CLB	CHECKED	NC
ENG	RB	Q.A.	AD
DATE	MAR '18	SCALE	1:100 @ A1
DRAWING No.	SHEET	5 OF 10	

B8014-E05

PLOT DATE: 21/11/2018

Size: A1 Rev: A



TENDER